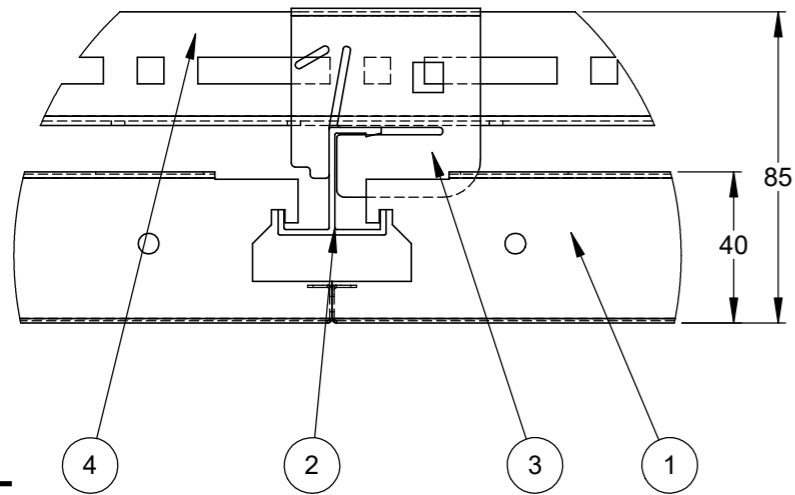
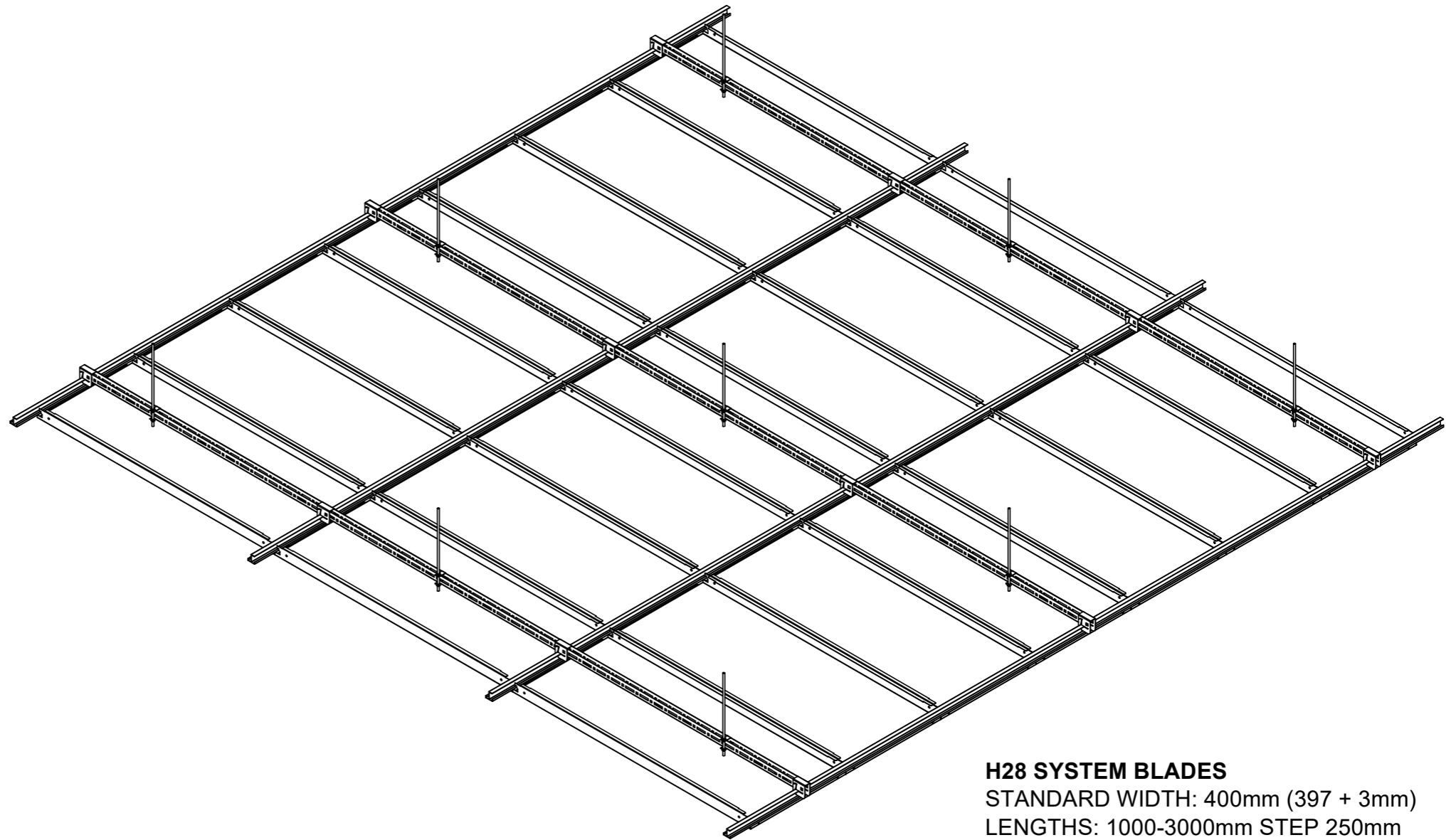
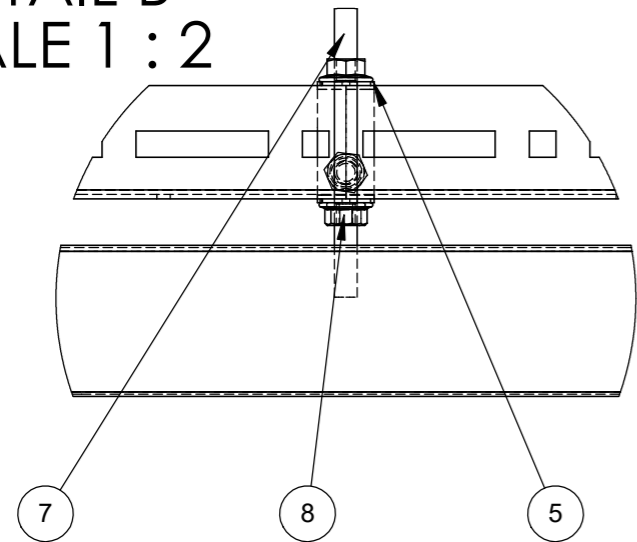


**DETAIL A  
SCALE 1 : 2**



**DETAIL B  
SCALE 1 : 2**



**H28 SYSTEM BLADES**  
 STANDARD WIDTH: 400mm (397 + 3mm)  
 LENGTHS: 1000-3000mm STEP 250mm  
 SIMMETRICAL JOINTS  
 OPTIONAL GASKET BETWEEN BLADES (3mm)

#	ITEM	Description
1	H28_1000x400_h40	H28 SYSTEM PANEL 1000x400 h40
2	H28_Profile_L3000_V2	H28 PROFILE
3	H28_HT-Z_Connector	H28-U PROFILE HANGER
4	W_PU_20x30	U PROFILE 30x20x30
5	W_SO-PU-20x30	20x30 "U" PROFILE HANGER FOR THREADED ROD
6	W_SCREW_M6x15	SCREW ISO 4016 M6x15
7	BF_300	M6 THREADED ROD L=300mm
8	W_NUT_M6	M6 FLANGED NUT

Material:		Part number: <b>H28 SYSTEM BASE STRUCTURE</b>	
Finish:		Description: <b>H28 SYSTEM</b>	
Unless Otherwise Stated: Linear Tol.: $\pm 0.2$ , Angular Tol.: $0^{\circ}15'$ Surface Finish: $0.8\mu\text{m}$ All Dimensions: mm Drawing Scale: <b>1:10</b>		This drawing and any information or descriptive material set out on it are the confidential and copyright property of TRE C and MUST NOT BE DISCLOSED, COPIED, LOANED in whole or part or used for any purpose without our written permission.	
Approx Weight: Kg		Drawing Produced In Accordance With: <b>ISO 128</b>	
Projection Method: <b>FIRST ANGLE</b>		Sheet Size: <b>A3</b>	
		false ceiling systems insulating panels soundproofing cabins Via Piani dei Resinelli, 9 22036 Erba(CO) ITALY www.trec.it - info@trec.it	
		Drawn by: <b>sergio.avaro</b> Checked/Approved by: <b>alessio.maggi</b> Drawing number:	
		Drawn Date: <b>31/01/2024</b> Approved Date: <b>27/02/2024</b> 0497/24 Sheet: <b>1 of 1</b>	